

NEW X-tube™

fluorescent LED tube T8

X-Tube is an upgraded version CFL tube replacement with LED. It has the best configuration of brightness and power efficiency.

X-tube™ is designed to replace medium bi-pin T8 and T12 fluorescent tubes. X-tube™ fits directly into most fluorescent fixtures providing a simple upgrade to high quality LED lighting. X-tube™ is optimized to provide light outputs comparable to fluorescent and delivers the immediate benefits of white-LED lighting; long lifetimes, no maintenance, high efficiency, no mercury, no recycling, no flickering, no buzzing, instant start, cold temperature operation, and high quality light. It provides energy savings of up to 75% over fluorescent applications that require long hours with low occupancy rates such as stairwells, corridors, warehouses, and remote locations. The high quality X-tube™ replacement tube is constructed from extruded aluminum to provide a virtually unbreakable, vandal proof lighting solution.

Why our X-tube™?

- Much longer life than CFL tube: min. 10 years (suppose that light is on 8 hours per day)
- 70%~80% Energy-saving over Fluorescent tubes
- Solid State, high shock/vibration resistant
- Work without ballast, Instant soft-start
- No RF interference, No flickering or buzzing
- Quick and easy installation to minimize retrofit costs
- Minimum maintenance costs, Produce little Heat
- No Mercury and other hazardous materials, fully RoHS-compliant
- Continuous operation for white LEDs (10 years for other colors)
- Rated to operate from -4°F to 104°F [-20°C to 40°C], perfect for environments with extreme climates
- Epistar+Intermatix LED packaging solution, no patent trouble
- The newest design
- The best cost-effective
- Complete electricity isolation design, safety prov
- ETL certification

Technical Parameters

- Standard length 60cm, 120cm and 150cm.
- Rated input voltage 100-240V AC, 50-60Hz, maximal input voltage 277V AC.
- PF (power factor) >0.9
- 12V/24V DC available.
- Light efficiency > 95 lm/W (clear and wave cover)

Applications



parking lot



residential



warehouse



signage



office

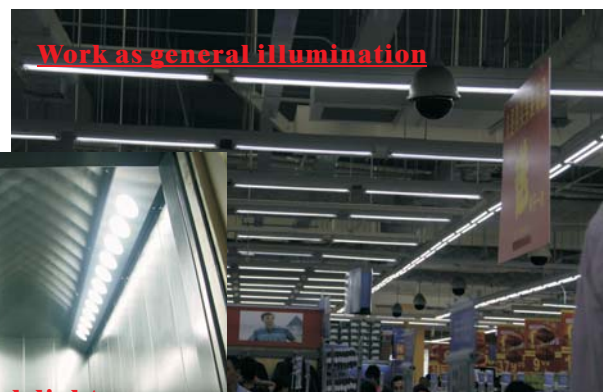


railway station

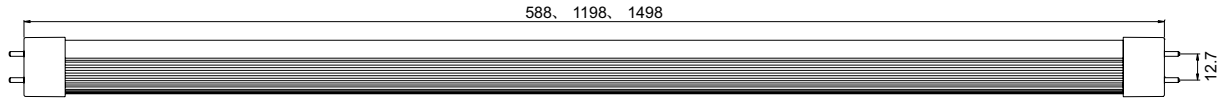


bus

◆ ◆ ◆ ◆



Dimensions (Unit: mm/inch)



Specifications

X-tube™ has 3 types according to its front shells.



wave cover



frosted cover



clear cover

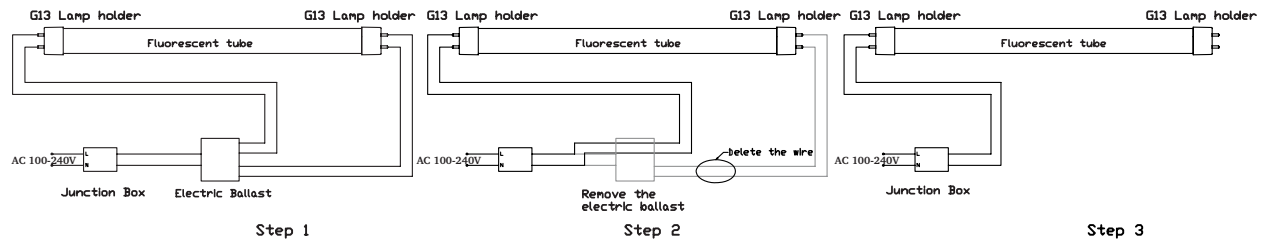
Type	Model number	Color	voltage	Length (cm)	Power (W)	Light output (lm)	LED Q'ty	PF		
Wave cover	FT8-012-AW-W-01W	White	AC100-240V 50/60Hz MAX.:277V (DC12/24V available)	60	12	1388	144	≥0.9		
	FT8-012-AW-WW-01W	Warm white				1127				
	FT8-012-AW-NW-01W	Natural white				1289				
	FT8-025-AW-W-01W	White		120	25	2560	288			
	FT8-025-AW-WW-01W	Warm white				2280				
	FT8-025-AW-NW-01W	Natural white				2432				
	FT8-034-AW-W-01W	White		150	34	3382	384			
	FT8-034-AW-WW-01W	Warm white				2943				
	FT8-034-AW-NW-01W	Natural white				3212				
Frosted cover	FT8-012-AW-W-01F	White		AC100-240V 50/60Hz MAX.:277V (DC12/24V available)	60	12	1056		144	≥0.9
	FT8-012-AW-WW-01F	Warm white					900			
	FT8-012-AW-NW-01F	Natural white					1012			
	FT8-025-AW-W-01F	White			120	25	1931		288	
	FT8-025-AW-WW-01F	Warm white					1730			
	FT8-025-AW-NW-01F	Natural white					1892			
	FT8-034-AW-W-01F	White			150	34	2779		384	
	FT8-034-AW-WW-01F	Warm white					2457			
	FT8-034-AW-NW-01F	Natural white					2640			
Clear cover	FT8-012-AW-W-01C	White	AC100-240V 50/60Hz MAX.:277V (DC12/24V available)	60	12	1438	144	≥0.9		
	FT8-012-AW-WW-01C	Warm white				1159				
	FT8-012-AW-NW-01C	Natural white				1367				
	FT8-025-AW-W-01C	White		120	25	2644	288			
	FT8-025-AW-WW-01C	Warm white				2300				
	FT8-025-AW-NW-01C	Natural white				2511				
	FT8-034-AW-W-01C	White		150	34	3345	384			
	FT8-034-AW-WW-01C	Warm white				2897				
	FT8-034-AW-NW-01C	Natural white				3177				

Absolute Maximum Rating

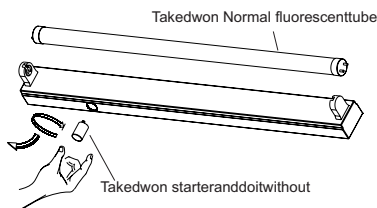
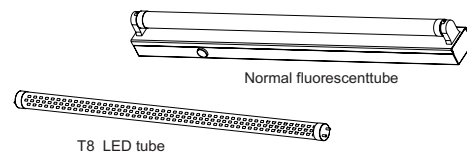
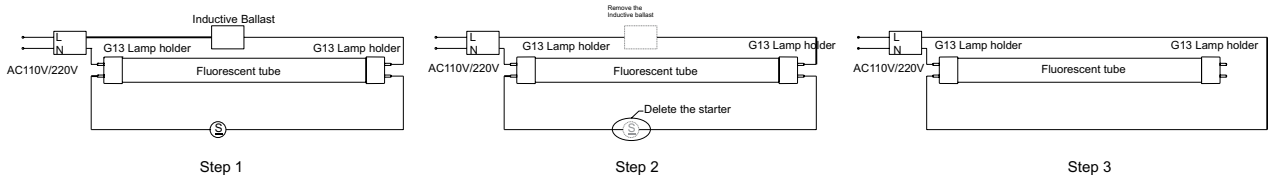
Parameter	Rating	Units
Aluminum Heat sink Temperature	67	C
Operating Temperature	-20~+40	C
Storage Temperature	-40~+85	C
Equilibrium Temperature	52	C

Installation Drawing

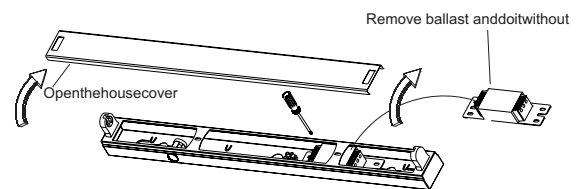
How to install LED Tube?



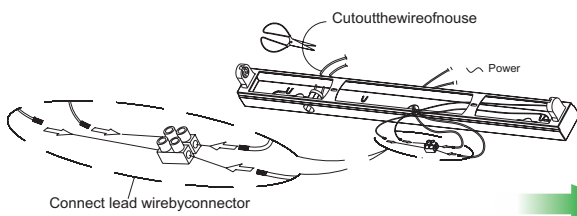
Installation Inductive Ballast



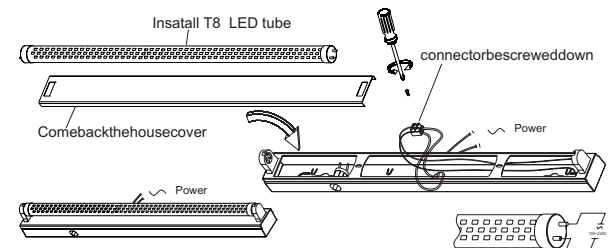
Step 1



Step 2



Step 3



Step 4

Signcomplex Limited Warranty

Signcomplex warrants this product ("Product") against defects in material or workmanship for a period of three years from the date of purchase. If this Product is determined to be defective, Signcomplex will repair or replace the Product, at its option. This warranty does not cover cosmetic damage or damage due to acts of God, accident, misuse, abuse, negligence, commercial use, or modification of, or to any part of the Product. This warranty does not cover damage due to improper operation or maintenance, connection to improper voltage supply, or attempted repair by anyone than a facility authorized by Signcomplex to service the Product.

Repair or replacement as provided under this warranty is the exclusive remedy of the customer. Signcomplex shall not be liable for any incidental or consequential damages for breach of any express or implied warranty on this Product except to the extent prohibited by applicable law, any implied warranty of merchantability or fitness for a particular purpose on this Product is limited in duration to the duration of this limited warranty.

Some states do not allow the exclusion or limitation of incidental or consequential damages, or allow limitations on how long an implied warranty lasts, so the above limitations or exclusions may not apply to you. This warranty gives you specific legal rights, and you may have other rights which vary from state to state.

Only Signcomplex may change, amend or modify the terms of this Limited Warranty and any such change, amendment or modification shall be in writing and is sued by Signcomplex. To obtain warranty service and shipping information call +86 755 2760 8650 or e-mail info@signcomplex.com. You must provide proof of purchase in the form of a bill of sale or receipted invoice which is evidence that the Product is within the warranty period to obtain warranty service. Consumers have legal rights under applicable national legislation governing the sale of consumer goods. Such rights are not affected by the warranties provision outlined in this document.

