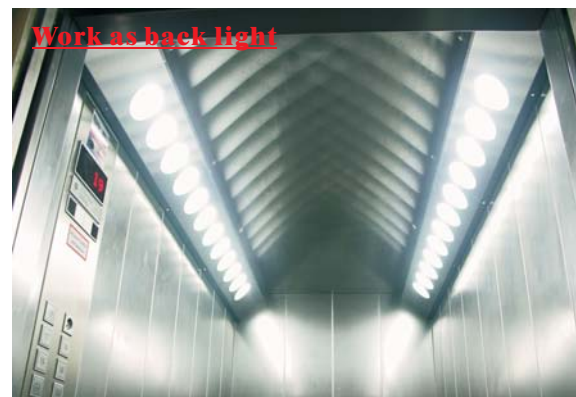
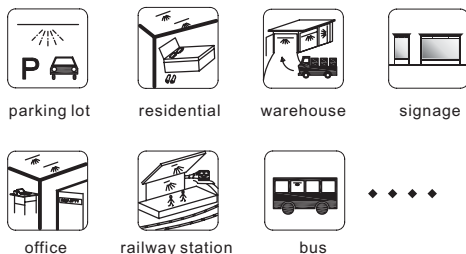


Fluorescent LED Tube T8 Series

Why our T8?

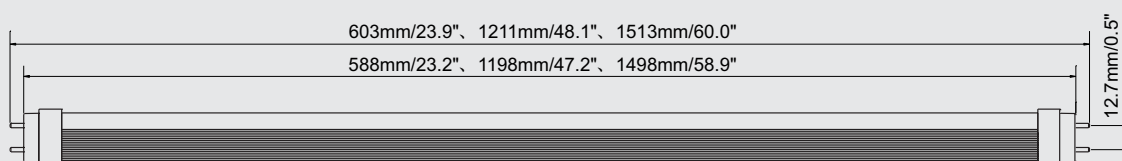
- Much longer life than CFL tube: min. 10 years (at an average usage of 8 hours per day).
- 70%~80% Energy-saving over Fluorescent tubes.
- Solid State, high shock/vibration resistance.
- Work without ballast, Instant soft-start.
- No RF interference, No flickering or buzzing.
- Quick and easy installation to minimize retrofit costs.
- Minimum maintenance costs, generates little Heat.
- No Mercury and other hazardous materials, fully RoHS-compliant.
- Continuous operation for white LEDs (10 years for other colors).
- Rated to operate from -4°F to 104°F [-20°C to 40°C], perfect for environments with extreme climates.
- Epistar+Intermatix LED packaging solution, non patent-infringing.
- Modern design.
- Highly cost-effective.
- Completely insulated electrical design for maximum safety
- ETL certification .

Applications



Dimensions (Unit: mm/inch)

L-tube™



L-tube™

Feature

- Cost-effective.
- Custom-designed built-in driver, with reliable performance and long lifespan.
- UL & TUV certified circuit design.
- No risk of electric shock during installation.
- Compatible with existing inductive ballast fixtures, reducing installation cost and maintaining the warranty of the whole fixture.

Technical Parameters

- Standard length: 60cm, 120cm and 150cm.
- Rated input voltage: 100-240V AC, 50-60Hz, maximal input voltage 277V AC.
- PF (power factor): >0.91.
DC 12/24V available

L-tube™ 3 types according to its front shells.



wave cover



frosted cover

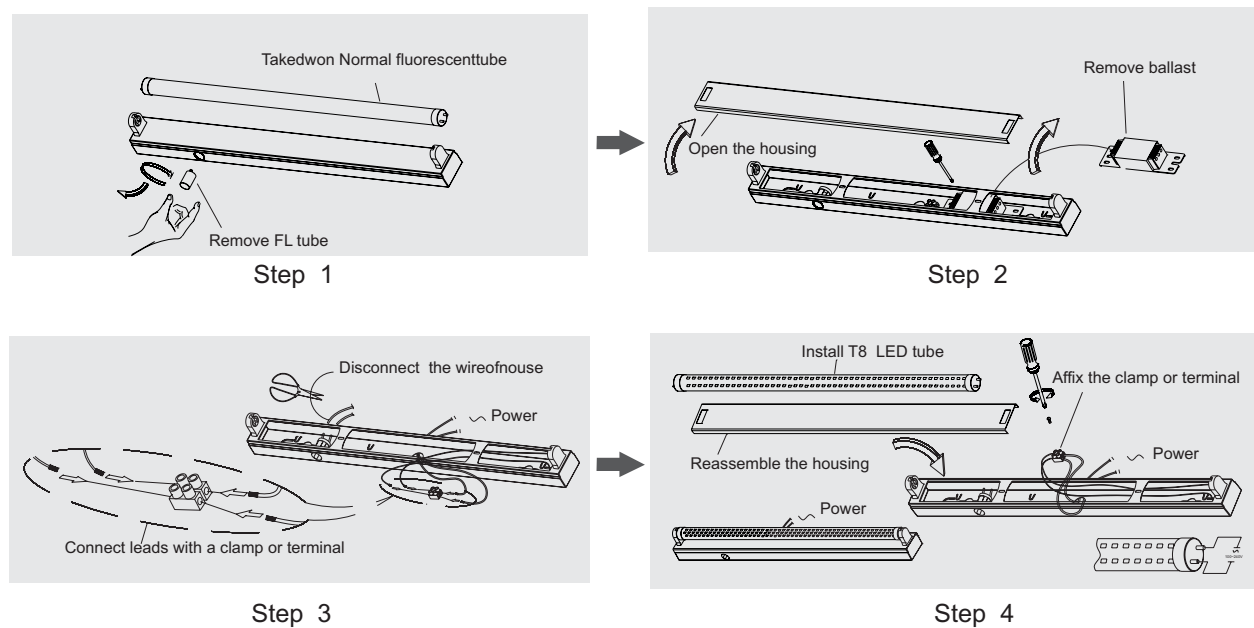
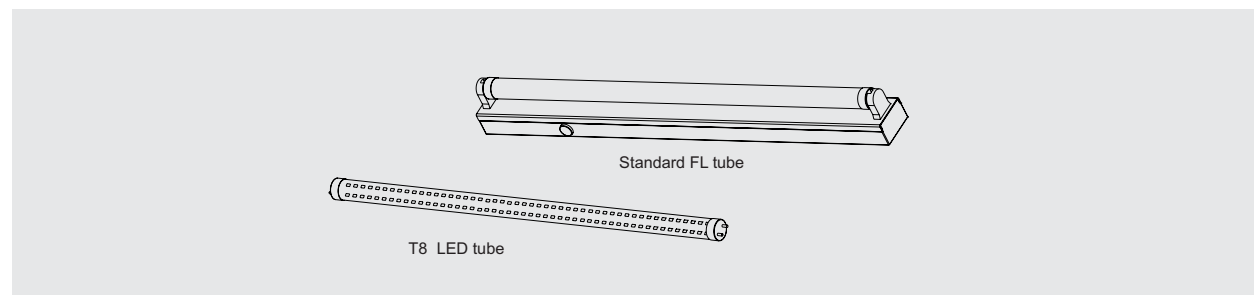
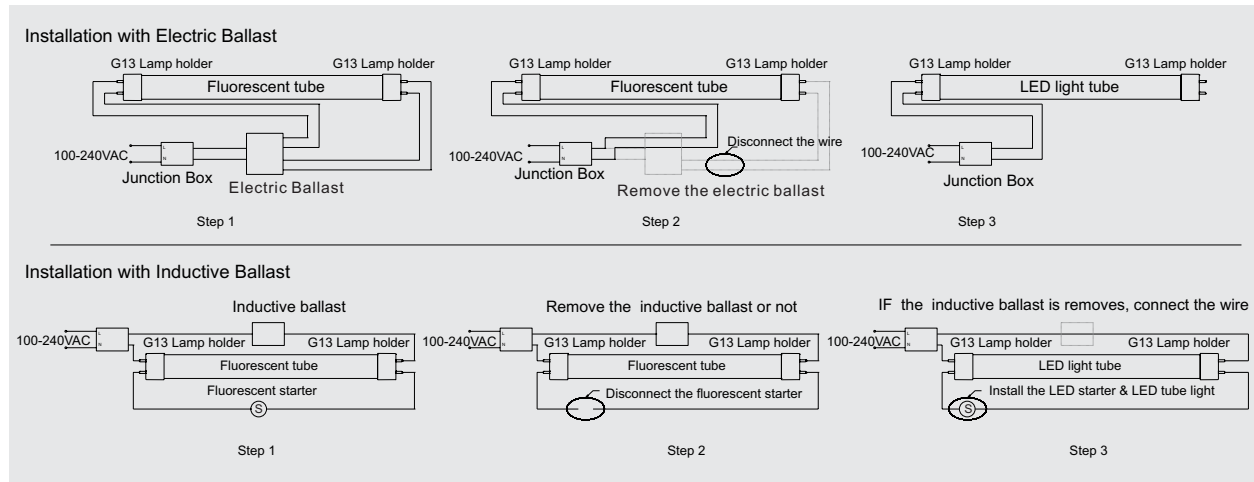


clear cover

| Type | Model number | Color | voltage | Length (cm) | Power (W) | Light output (lm) | LED Q'ty | PF |
|---------------|-------------------|---------------|---|-------------|-----------|-------------------|----------|-------|
| Wave cover | LT8-009-AW-W-01W | White | AC100-240V 50/60Hz MAX.277V (DC 12/24V available) | 60 | 8.5 | 608 | 108 | ≥0.90 |
| | LT8-009-AW-WW-01W | Warm white | | | | 582 | | |
| | LT8-009-AW-NW-01W | Natural white | | | | 592 | | |
| | LT8-015-AW-W-01W | White | | 120 | 15 | 1065 | 192 | |
| | LT8-015-AW-WW-01W | Warm white | | | | 983 | | |
| | LT8-015-AW-NW-01W | Natural white | | | | 1022 | | |
| | LT8-018-AW-W-01W | White | | 150 | 18 | 1288 | 240 | |
| | LT8-018-AW-WW-01W | Warm white | | | | 1201 | | |
| | LT8-018-AW-NW-01W | Natural white | | | | 1302 | | |
| Frosted cover | LT8-009-AW-W-01F | White | AC100-240V 50/60Hz MAX.277V (DC 12/24V available) | 60 | 8.5 | 500 | 108 | ≥0.90 |
| | LT8-009-AW-WW-01F | Warm white | | | | 489 | | |
| | LT8-009-AW-NW-01F | Natural white | | | | 503 | | |
| | LT8-015-AW-W-01F | White | | 120 | 15 | 893 | 192 | |
| | LT8-015-AW-WW-01F | Warm white | | | | 824 | | |
| | LT8-015-AW-NW-01F | Natural white | | | | 848 | | |
| | LT8-018-AW-W-01F | White | | 150 | 18 | 1093 | 240 | |
| | LT8-018-AW-WW-01F | Warm white | | | | 1020 | | |
| | LT8-018-AW-NW-01F | Natural white | | | | 1040 | | |
| Clear cover | LT8-009-AW-W-01C | White | AC100-240V 50/60Hz MAX.277V (DC 12/24V available) | 60 | 8.5 | 591 | 108 | ≥0.90 |
| | LT8-009-AW-WW-01C | Warm white | | | | 573 | | |
| | LT8-009-AW-NW-01C | Natural white | | | | 595 | | |
| | LT8-015-AW-W-01C | White | | 120 | 15 | 1114 | 192 | |
| | LT8-015-AW-WW-01C | Warm white | | | | 1015 | | |
| | LT8-015-AW-NW-01C | Natural white | | | | 1102 | | |
| | LT8-018-AW-W-01C | White | | 150 | 18 | 1336 | 240 | |
| | LT8-018-AW-WW-01C | Warm white | | | | 1226 | | |
| | LT8-018-AW-NW-01C | Natural white | | | | 1290 | | |

Installation Drawing

How to install the LED tube:



Signcomplex Limited Warranty

Signcomplex warrants this product ("Product") against defects in material or workmanship for a period of three years from the date of purchase. If this Product is determined to be defective, Signcomplex will repair or replace the Product, at its option. This warranty does not cover cosmetic damage or damage due to acts of God, accident, misuse, abuse, negligence, commercial use, or modification of, or to any part of the Product. This warranty does not cover damage due to improper operation or maintenance, connection to improper voltage supply, or attempted repair by anyone than a facility authorized by Signcomplex to service the Product.

Repair or replacement as provided under this warranty is the exclusive remedy of the customer. Signcomplex shall not be liable for any incidental or consequential damages for breach of any express or implied warranty on this Product except to the extent prohibited by applicable law, any implied warranty of merchantability or fitness for a particular purpose on this Product is limited in duration to the duration of this limited warranty.

Some states do not allow the exclusion or limitation of incidental or consequential damages, or allow limitations on how long an implied warranty lasts, so the above limitations or exclusions may not apply to you. This warranty gives you specific legal rights, and you may have other rights which vary from state to state.

Only Signcomplex may change, amend or modify the terms of this Limited Warranty and any such change, amendment or modification shall be in writing and is sued by Signcomplex. To obtain warranty service and shipping information call +86 755 2760 8650 or e-mail info@signcomplex.com. You must provide proof of purchase in the form of a bill of sale or receipted invoice which is evidence that the Product is within the warranty period to obtain warranty service. Consumers have legal rights under applicable national legislation governing the sale of consumer goods. Such rights are not affected by the warranties provision outlined in this document.

